



PARKVIEW PUBLIC SCHOOL NEWSLETTER

Park Avenue, Leeton
Ph: 02 6953 2600 Fax: 02 6953 5066
Email: parkview-p.school@det.nsw.edu.au
www.parkview-p.schools.nsw.edu.au

4th September 2023

DATES FOR YOUR CALENDAR

SEPTEMBER

Mon 11th

Tues 12th

Thursday 14th

Fri 15th

Mon 18th

Fri 22nd

- Altina Wildlife Park Excursion – Year 2
- Altina Wildlife Park Excursion - Kindergarten
- Altina Wildlife Park Excursion – Year 1
- LNPSSA Stage 2 Rugby League Gala Day - Leeton
- P&C Meeting 7pm – PPS Library
- Last Day of Term

OCTOBER

Mon 9th

Fri 20th

Wed 25th – Thurs 26th - NSWPSA Athletics Championships (Homebush)



SCHOOL SPONSORS

**Advertising
Opportunity
Available**

 **Zach Quigley**
0428 187 042
zach@quigleyair.com.au

QUIGLEY AIR
Specialising in
Heating, Cooling &
Refrigeration

- ✓ Supply
- ✓ Install
- ✓ Service
- ✓ Repair

ABN 97 995 892 621 | Lic. 284937C | AU38334

David Boots

B/H: (02) 6953 4296
FAX: (02) 6953 4082

Michael
Ph: (02) 6955 6303
Mb: 0427 641 849

Allan-Yard Foreman
Mb: 0409 657 095

Sand and Gravel

OPEN 7 DAYS

WAMOON ROAD, LEETON 2705

KILLEN TILING

 **Wall & Floor
Specialists**
See our work on
facebook

Lic 288074C

Tim 0431 136 004
killen.tiling@gmail.com

Golden Apple SUPA IGA

Yanco Road LEETON
Phone: 02 6953 2000

- Groceries & Meat
- Fruit & Vegetables
- Gardening Needs

**Leeton
Kitchens
Cabinets**

**Quality Kitchens & Cabinets
By Qualified Craftsmen**

Computer Generated Designs - Preview your Kitchen in 3D

7 Mahogany Rd Leeton

T: 02 6953 4970
F: 02 6953 4972
E: 0400 138 983
leetonkitchens@bigpond.com

OFFICE SUPPLIES



- Stationery
- Office Furniture
- Copy Paper

MAXIM STATIONERY
Phone (02) 6953 6366
25-27 Massey Ave, Leeton



Leeton Out of School Care
Afterschool and Holiday Care
for children K - 6

Ring Keira McCallum on 6953 5788

Annette's Training
ADREN 10 285 704 007

"Delivers nationally recognised training in partnership with, and under the Auspices of, Allens Training Pty Ltd RTO 90609"

**FIRST AID & WHS
SPECIALISTS**
02 6953 4688

Address: 46 Kurrabung Avenue, Leeton
Fax: 02 6953 4699
Email: cindy.annetstraining@bigpond.com

Lic. No. 284934C

 **DJR BUILDING**

Contact Dion Rook
0488 489 188
djr-building@hotmail.com

- Extensions
- Renovations
- Decks
- Carports
- Maintenance & Repairs

**LASHBROOK
PAINTING &
DECORATING**

For all your painting requirements!



- New homes
- Extensions
- Renovations
- Commercial
- Repairs
- Touch-ups

FREE QUOTES
Phone David **0438 227 322**
or Graham **6953 4985**

**Advertising
Opportunity
Available**

Please support the above sponsors who are supporting our school



PARKVIEW PUBLIC SCHOOL

WEEK 8 TERM 3 Commencing Monday 4th of September 2023

Welcome to Week 8 of the term at Parkview. We hope that all of the Dads, Grandads, Uncles, Brothers and Mum's who act as Dads had the best possible Father's Day yesterday.

Fathers Day Lunch at school last Friday was a wonderful success with so many family members in our school celebrating with our kids. It was great to see you all! Some photos from the day can be found later in the newsletter and also on our social media streams.

Last week was another extremely busy week in our community, highlighted by the achievements of our Girls Basketball team who travelled to Deniliquin Stadium to take on Edward PS in the Riverina Semi Finals of the **NSWPSSA Girls Basketball Knockout**. Our team recorded an exciting victory and are now into the Riverina Final for the second consecutive year. A full report can be found in Talking Sport!



Notes that you can expect to see this week:

- **Riverina Basketball Final Permission (selected students via Sentral Parent Portal)**
- **K-2 Major Excursion Reminder (via Sentral Parent Portal)**

Notes in the last week:

- **Father's Day Lunch and Stall**

We have an extremely busy three weeks ahead of us. Please consider the following as we move towards the end of what has been an amazing term:

Check-in Assessment for Year 6

During Weeks 9 & 10 of this term, Year 6 students will participate in the Check-in assessment.

The Check-in assessment is an NSW Department of Education online literacy and numeracy assessment available to support schools to assess and monitor student learning.

The assessment will supplement existing school practices to identify how students are performing in literacy and numeracy and to help teachers tailor their teaching more specifically to student needs. Students who already receive additional support in the classroom will receive the same level of support during the

assessment. The major details of the assessment are outlined below:

- The assessment will be scheduled for our Year 6 students during Weeks 9-10
- All students will complete a reading assessment, a writing assessment, and a numeracy assessment.

If you have any questions in relation to this activity, please contact the school.

Infants Major Excursion – Altina Wildlife Park Zoo-fari

Week 9 (next week) will be a busy week for students in Kindergarten to Year 2! Throughout the week the students and staff will be venturing to Darlington Point to spend the day at Altina Wildlife Park.

Altina Wildlife Park - The Zoo-fari like no other, meet the animals up close and personal with your guide whilst travelling in style on personalised horse drawn or motorised carts. Altina's guides take all visitors around the park to meet the animals during their daily feed times to see these magnificent animals closer than you ever thought possible. The guided tour around the park goes for 2.5 hours and is the only way to see Altina's animals.

REMINDER FOR PARENTS: Permission notes and payment options are available through the Sentral Parent Portal. Please ensure you have carefully read the details and submitted permission and payment prior to Friday 8th September.

Each Year group will be attending on a different day:

- Monday 11th September, Depart 9.10am and Return 3pm - Year 2
- Tuesday 12th September, Depart 9.10am and Return 3pm - Kindergarten
- Thursday 14th September, Depart 9.10am and Return 3pm - Year 1

School Uniforms

Parents and Carers are reminded that for the next three weeks of the school term, parents can dress their children in a school uniform that reflects the prevailing weather conditions.

This means summer or winter uniform is appropriate depending on the weather. From the first day of Term 4, students are requested to be dressed in full summer uniform. Please contact the school if you have any queries.

A reminder that the Uniform Shop is open Mondays 9am-10am and Thursdays 2:10pm-3:10pm or via appointment.

Kindergarten 2024 Transition

Our Kindergarten 2024 Transition Program has got off to a wonderful start, with children enjoying their new surrounds and settling into new routines and making new friends!

If you are yet to register your child for this program it is not too late to register and get involved with Leeton's most comprehensive Kindergarten Transition Program. Details of how to register are included below:

 **Registration** or can be completed online via the link provided:

<https://forms.gle/pZ4cmypzipNQv1HkZ6>

Winhangara Playgroup

Winhangara Playgroup continues **Thursday 7th September**. Come and enjoy this experience in the comfort of the **School Hall** from 9:15am-10:45am. As always, we will have a huge range of activities and experiences for all children 0-5 years, and it is a great way for parents and carers to socialise and connect.

Bring the kids and bring a friend. We would love to see you 😊



Following us on Facebook

Are you on Facebook? To get all the latest breaking news and previews of the coming school day ahead, like our school Facebook page and join over 2350 followers who stay up to date with our school happenings via social media.

Uniform Shop

Our P&C Uniform Shop will continue its normal opening times of Monday 9am – 10am and Thursday 2:10pm – 3:10pm. If you require access to the Uniform Shop outside of these times, please contact the school to organise a mutually convenient time to access your uniform needs.

Parkview Public School Website

Don't forget to log on to www.parkview-p.schools.nsw.edu.au for all of the latest news, pictures and calendar updates for your school and links to educational information that is relevant to your child!

Golden Apple Docket Fundraiser

Please keep your Golden Apple shopping dockets and place them in the container at the front office. This is a great way to raise funds for our students. Parkview Public School receives 5c from every ten dollars collected.

Finally, as always, if you have an issue or concern please contact the classroom teacher, the appropriate Assistant Principal or myself. From time-to-time issues arise at school. This is perfectly normal for any school setting so if you have any questions, issues, enquiries, or you want feedback on any aspect of your child's schooling please ring to make a **mutually convenient appointment time** with your child's teacher, Assistant Principal, or myself.

**Regards,
Travis Irvin
Principal**



The poster is green with a white starburst shape on the right side containing text. It features several photos of children and adults. The text includes the school name, the year 2024, the program name, and contact information. A section titled 'TRANSITION COMMENCES' lists the date and time. At the bottom, it mentions that all sessions include a healthy morning tea and play-based learning opportunities, and that all children between birth and 5 years are welcome to attend. A Facebook logo is also present.

PARKVIEW
PARKVIEW PUBLIC SCHOOL
★ 2024 ★
**KINDERGARTEN
TRANSITION
ENROL NOW**

For more information and to pick up your prospectus contact the school:
Phone: 02 6953 2600
Email: parkview-p.school@det.nsw.edu.au
Visit: Administration Office 8:30am-3:30pm
Web: www.parkview-p.schools.nsw.gov.au

TRANSITION COMMENCES
WEDNESDAY
23RD AUGUST 2023
11:30AM - 1:15PM
Times to vary later in program

Find us on:
facebook

All sessions include a healthy morning tea and play based learning opportunities provided by our Early Childhood Educator.

All children between birth & 5 years are welcome to attend.

PARKVIEW
Contact us at Parkview Public School on 69532600



Infants Major Excursion 2023: Altina Wildlife Park Zoo-fari!

Week 9 (next week) will be a busy week for students in Kindergarten to Year 2! Throughout the week the students and staff will be venturing to Darlington Point to spend the day at Altina Wildlife Park.

Altina Wildlife Park - The Zoo-fari like no other, meet the animals up close and personal with your guide whilst travelling in style on personalised horse drawn or motorised carts. Altina's guides take all visitors around the park to meet the animals during their daily feed times to see these magnificent animals closer than you ever thought possible. The guided tour around the park goes for 2.5 hours and is the only way to see Altina's animals.

REMINDER FOR PARENTS: Permission notes and payment options are available through the Sentral Parent Portal. Please ensure you have carefully read the details and submitted permission and payment prior to Friday 8th September.

Each Year group will be attending on a different day:

- Monday 11th September, Depart 9.10am and Return 3pm - Year 2
- Tuesday 12th September, Depart 9.10am and Return 3pm – Kindergarten
- Thursday 14th September, Depart 9.10am and Return 3pm - Year 1





WEEK 8 TERM 3



Riverina Girls Basketball Semi Final

Parkview's Representative Girls Basketball Team travelled to Deniliquin last Thursday (August 31st) to take on Edward PS in the Riverina Semi Finals of the NSWPSA State Knockout at the Deniliquin Stadium.

The hosts came out firing early in the game, opening up and 12-8 quarter time lead which they stretched to as much as 8 points mid-way through the second term. Parkview's disciplined defence began to pay dividends with their opponents finding themselves in foul trouble as our team levelled the scores at 16-16 at half time.

The third quarter was a tense battle with just 6 points scored, all by Parkview as they led by that margin at three quarter time before an outstanding final quarter saw our determined team run out 17-point victors to secure a place in the Riverina Final for the second successive year.

For Parkview, an even team performance saw all players make valuable contributions to the result. **Airlie Chilko** controlled the game with her impressive dribbling skills, attacking the basket and scoring a number of jump shots from just outside the key. Her aggressive defence caused turnovers and a number of steals which complemented her game high 23 points. **Ava Gilmour** was also a vital member of the starting five, running hard at both ends of the floor, driving hard to the basket scoring vital baskets and providing outstanding defensive pressure which led to a number of opposition turnovers. **Miah Weymouth** worked the floor hard both offensively and defensively. Her athletic ability allowed her to run the floor and provide a long pass for a fast break. She surprised everyone (including herself) by scoring from a hook shot off the backboard from outside the key. Definitely the offensive highlight of the game!

Daisy Kelly was strong with her rebounding, showing an ability to dribble out of trouble with crossovers and spins. She ran both ends of the floor and attacked the basket when she got the chance, while **Taylah Blowes** was given a defensive role on a strong athletic opposing player, and she worked hard to shut her opponent down. She listened well to the coach and implemented her role well. She used her speed to chase down fast breaks, rebounding and scoring an important basket to help tie the game at half time.

Zoe White was also a crucial member of the team who gained confidence the longer the game went. In an exciting final quarter, she got a couple of strong rebounds which were followed by two baskets which helped seal the match, whilst teammate **Keira Hewson** was also extremely strong on the boards, pulling down a number of offensive and defensive rebounds and she also moved well down the court to create fast break opportunities for her team.

Maycie Wall provided excellent defensive pressure denying her player from getting the ball while on offense she positioned herself well and got some important rebounds and provided assists by passing to a teammate in scoring positions. Her teammate **Grace Goman** complemented those contributions well, displaying strong defensive pressure throughout the match, getting her hands on the ball and causing a high number of turnovers and steals. Grace also displayed confident dribbling and finished the game scoring a memorable jump shot. **Tayliah Coughlan** also proved to be an extremely enthusiastic player and ran the floor well. She was most notable for chasing down the fast breaks with great determination and provided a couple of important assists with some outstanding passing.

FINAL SCORES:

Parkview PS 39 (Airlie Chilko 23, Ava Gilmour 4, Zoe White 4, Taylah Blowes, 2, Keira Hewson 2, Miah Weymouth 2, Grace Goman 2)

Edward PS 22



Riverina Girls Soccer Semi Final

Parkview's Representative Girls Soccer Team will travel to Griffith this Tuesday (September 5th) to take on Griffith East PS in the Riverina Semi Finals of the NSWPSSA State Knockout. We wish our team all the best for this opportunity.

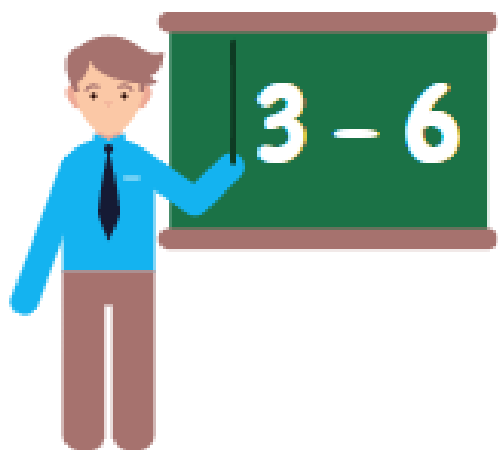


House Championship 2023

Accurate at 04/09/2023

WEEK 7 TERM 3	BRADMAN	FREEMAN	THORPE
SWIMMING CARNIVAL	300	318	362
CROSS COUNTRY CARNIVAL	323	286	327
ATHLETICS CARNIVAL	574	396	374
FARRELL CUP	TERM 4		
CLASS POINTS	44	45	43
TOTAL POINTS SCORE	2254	2030	2076

Bradman lead **Thorpe** by 174 points



CLASS NEWS

3G

Leah Iannelli
Aubrey Coghill
Peter Martinelli
Patrick Reid
Harrison Goman
Taite Reilly

Miss Green

independently editing and reviewing her work
using prior knowledge to estimate the weight of different objects
being an enthusiastic and determined reader
writing an interesting narrative set on Mars
making awesome connections between the Earth, Sun and Moon
applying learnt spelling rules and generations to her writing

3D

Lacey Campbell
Aiden Lewis
Louis Killen
Stroud Fernando
Braxton Pike

Miss Deeves

being more confident with 2, 5, 10 and 11 timetables
using his knowledge of space to help him write a narrative
working hard with our new spelling program and remembering past rules
writing a descriptive sentence to start his story about Mars
using estimation to work out the weight of some grocery items using hefting

4W

Jason Bevan
Chloe McWhinnie
Pippa Quigley
Nalan Robertson
Connor Whiteman
Riley Scali

Miss White

exploring new techniques and medium in his art making
confidently making arrays to demonstrate multiplication
attention to detail when incorporating learning into her space narrative
actively applying his spelling knowledge to write unknown words
applying the commutative property to solve multiplication problems
detailed explanation of how Seasons occur

4/5H

Dominic Marshall
Amelia Stephens
Lex Napier
Eloise Robertson
Gemah Krause
Jenny Thorpe
Tori Stanley

Mrs Hislop

a huge improvement in his writing over the year
a great effort writing her 'Stranded on Mars' narrative
thoughtful work on multiplication and division maths problems
thoughtful work on her space station diary entries
a determined effort writing, revising and editing her Space Station diary
displaying her ability to use complex sentences in her writing
displaying her fabulous knowledge and ideas when contributing to class discussions

5M

Ruby Bryan-Doric
Taya Fraser
Ethan Curry
Maks Spencer
Ava O'Callaghan
Lucas Shute
Ashley Dunn

Miss Mountford

using compass directions to navigate from another NSW destination to Leeton
positively participating in drama games in her peer group
effectively and cohesively explaining how volcanoes erupt
persisting with spelling unfamiliar words with the -able and -ness suffixes
effectively rounding decimals to the nearest hundredth in town games
taking more care and effort in his handwriting and writing
using taught spelling strategies to improve her attempts at spelling unfamiliar words
using compass directions and familiar landmarks to successfully navigate through a Leeton street

Anayah Kaur

5C

Mahalia

Wade-Morphett

Olivia Clarke

Willie Du Preez

Daisy Kelly

Diezel Mohr

Latasha Salafia

Ruby Martin

Mrs Chilko

confidently rounding decimals

carefully thinking about learnt spelling concepts when writing unfamiliar words

enthusiastically sharing his ideas in Maths

great note taking on our writing topics

his enthusiasm to participate in our drama lessons

accurately using grid references in Maths

confidently applying suffixing rules when spelling

6E

Zoe White

Miah Weymouth

Deklan Boots

Keon Caneno

Blake Leighton

Nevaeh Patching

Samantha Fernando

Miss Eddie

completing her literacy tasks to a high standard

effectively providing examples to support a paragraph topic

developing his understanding of converting units of measurement

successfully completing the 'Splash Park' design challenge

completing his model of a Viking Ship based on information he had read

creating cohesive paragraphs explaining volcanic eruptions

writing a cohesive discussion on the pros and cons of participating in extreme sports

6G

Bailey Blackburn

Matthew Scali

Maci Barclay

Deegan Tiffin

Chayce Powles

Beau Roden

Montanna Connell

Mitchell Di Fiore

Miss Gill

getting into character in our Drama Readers Theatre Activities

increased confidence with converting fractions and volume

increased confidence with incorporating new spelling rules

quickly and efficiently simplifying fractions and creating mixed numerals

creating a detailed one-point perspective artwork

demonstrating passion and engaging with our Drama Activities

a sophisticated and accurate written explanation of volcanic eruption

continuous engagement with numeracy and mastering volume and capacity conversions

KH	Madison Hodge-Livingstone
KN	Logan Kingsbury
KB	Jye Iannelli
1Q	Gabbi Lister
1H	Lane Smith
2D	Blake Williams
2GW	Aiden Barber
3G	Lara Ganderton
3D	Braxton Pike
4W	Chloe McWhinnie
4/5H	Zarah Reid
5M	Dakoda Mawer-Kouzan
5C	Zaiah Preston
6E	Mikayla-Mae Bull
6G	Aleaha Bevan



STORM BOY



3G have immersed themselves in the class text 'Storm Boy' this term.
Take a look at our 'Mr Percival' inspired art!



4W Science

Earth in Space

Stage 2 have been learning about the Earth's relationship with the Sun: how the Sun, Earth and Moon interact, and the reason we have night, day and the seasons.

Test your Knowledge!

Down:

1. I revolve around the Sun
2. the length of time it takes the Moon to rotate around Earth
3. energy powered by the sun
4. an imaginary line running through the North the sun and South pole that Earth rotates around
7. the line early Vikings thought was evidence of a flat Earth
8. the scientific study of the universe
10. I orbit earth reflecting light
14. the reason we have seasons
15. the disappearance of the Sun below the horizon due to the Earth's rotation
16. I am the name of the imaginary line circling Earth
18. the hottest part of the Sun
21. I grow as the sun moves lower in the sky
23. I am the centre of the universe

Across:

5. the length of time equivalent to 365.25 days
6. the number of planets orbiting the Sun
9. a half of the earth
11. the name of the path the Earth takes around the sun
12. a space rock
13. an instrument that tells the time with shadows
17. the planet closest to the Sun
19. the month that gains an extra day every four years
20. flaming balls of gas the earth
21. a ringed planet (must like to Hoola)
22. the pole closest to Australia
24. a demoted dwarf planet

How did you do?

ANSWER KEY
DOWN:
1. Earth 2. month 3. solar 4. axis 7. horizon 8. astronomy 10. moon 14. tilt 15. sunset 16. equator 18. core 21. shadow 23. Sun
ACROSS:
5. year 6. eight 9. hemisphere 11. orbit 12. asteroid 13. sundial 15. sunrise 17. Mercury 19. February 20. stars 21. Saturn 22. south 24. Pluto



PARKVIEW SRC RETURN & EARN RECYCLING PROGRAM

The SRC have started a recycling program
for the school. The money raised will go
towards student resources.



Check your drink to see
if it can go in our green bins:

PUT IN

- Water bottles ✓
- Chill J s ✓
- Milk boxes ✓
- Soft drink cans ✓
- Juice boxes (with ✓

10 cent logo)

DON'T PUT IN

- Food ✗
- Rubbish ✗





PHOTO GALLERY

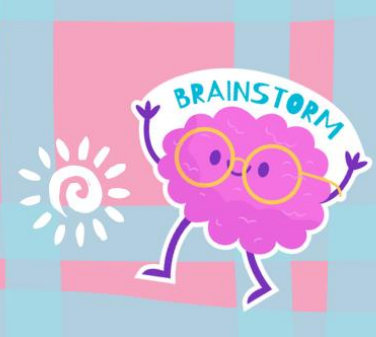
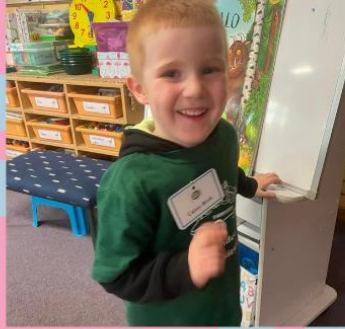




PHOTO GALLERY



CULTURAL

Lessons

On Friday, our Year 2 and 3 students engaged in their final cultural lessons of the term with Mr Longford, and our Bright Beginnings students joined in the learning fun as well!

This week the kids focused on taking care of themselves and others and shares information on the significance of the the Kangaroo (wambuwuny) and the Emu (dinawan) that are the two animals on the Australian coat of arms. The students thoroughly enjoyed learning about the movements of these animals through dance and language.

We also discussed the importance of living a healthy lifestyle and talked about being sun smart and the importance of staying hydrated with warmer weather approaching.





PHOTO GALLERY

FATHER'S DAY

LUNCH





PHOTO GALLERY





HOLIDAY CLINICS

DATE: 27/9/2023
TIME: 10.00am - 1.00pm
AGE: 5-12 years
COST: \$49
WHERE: Leeton No#1 Oval, Leeton NSW



**LEAGUE
STARS**

HONORING OUR ELDERS:

**PAST,
PRESENT, *and*
EMERGING**

**NAIDOC
WEEK
2023**



LEETON NAIDOC CELEBRATIONS

Join the Leeton community for NAIDOC Week
Event 2023

Family Fun Day

Thursday 28th September 2023 at 11am

Come to Gossamer Park to enjoy the Leeton & District
Local Aboriginal Land Council Family Fun Day

Welcome to Country

Free BBQ Lunch

PPS Wiradjuri Dance Group

Didge performance

Old Kentucky Farm Petting Zoo

Face painting & Craft Activities

Free Hot Donuts & Coffee

Lions Train & Jumping Castle

Leeton Fire truck & Leeton Library

Stalls, Giveaways and much more

**Alternative Venue
pending weather
Leeton Indoor
Stadium**

**Bush Chemist
Free Covid
Vaccinations
Clinic**





Parkview After School Auskick

Location: Parkview Public School Oval

Dates: Thursdays starting 14th September to 19th October (Last 2 Weeks of Term 3 & First 2 Weeks of Term 4)

Time: 3:30pm - 4:30pm

Auskick Pack: Kids will receive their very own Auskick football, bouncy ball, fidget popper, ball pump, player cards & Giants back pack.


Your child will enjoy a safe, fun, action-packed 4 session AFL program of games and skill development, ideal for boys and girls aged 5-12 for only \$50





REGISTER NOW - Visit play.afl or PlayHQ and search Parkview Public School (After School) Auskick Centre to find the centre and register.

For more information contact Sam Daniel 0498548078 sam.daniel@afl.com.au

play.afl/auskick   

 **REGISTRATIONS**
NOW OPEN
SEASON 2023-24

Scan to find your closest centre

5 REASONS
why you should register for Little Athletics!


-  Meet new people and spend time with your family and friends.
-  Participate in a variety of different events at your weekly meets.
-  Improve your physical fitness and mental wellbeing.
-  Have the opportunity to participate at local club meets & state competitions.
-  Achieve your personal best and continue to improve your skills.

REGISTER TODAY AT lansw.com.au



JOIN NOW  **Australian Air League**
NSW Group

NSW GROUP IS NOW ENROLLING





Since 1934 the Australian Air League has been teaching young boys and girls nationwide all about aviation, while helping them develop important life skills like leadership, discipline, self confidence and teamwork. When you join the league you will make new friends and take part in fun and exciting activities, on the ground and in the air.

Each week you will attend your local squadron where you will learn valuable skills and take part in fun and interesting activities and classes. Some of our classes include Meteorology, Navigation, Photography and Community Service. Squadrons also attend training camps, sport and recreational days, flying experiences and ceremonial drill.

We welcome boys and girls from the age of 8 years old from all different cultures and backgrounds. Parents and families are welcome to support or even join their local squadron as a volunteer. All adult members and volunteers are Working with Children Checked.

The Australian Air League is running both a fun and educational programme that is making fine citizens out of our young Australians.

FOR MORE INFORMATION ON THE AUSTRALIAN AIR LEAGUE AND YOUR CLOSEST SQUADRON PLEASE CONTACT

Email: development.nsw@airleague.com.au
www.airleague.com.au Email: info@airleague.com.au
Free Call: 1800 502 175

40TH ANNUAL *Narrandera Town & Country*
Open Gardens

FEATURING "BEREMBED STATION"
Sunday, 22nd October, 2023
ONLINE TICKETS AVAILABLE FROM EVENTBRITE

Online ticket holders can collect maps from
Plant Stall at Marie Bashir Park from 9.00am

\$25 PER PERSON ONLINE
(incl. Devonshire Tea + 25% Discount at Shady Gum Nursery)

GARDENS OPEN UNTIL 5.00pm
Lunch available from \$10 at Berembled Station
In aid of Narrandera Can Assist
Enquiries: 0428 597 655
Email: narranderagardenclub@gmail.com
facebook.com/narranderagardenclub





positive partnerships

Working together to support school-aged students on the autism spectrum

FREE 2 Day Autism Workshop for Parents and Carers

Location: Wagga Wagga, NSW

Join other local families to learn more
about autism and ways to strengthen the
partnership between home and school

During the workshop you will learn about:

- The diversity of autism
- Understanding sensory processing
- Understanding behaviour
- Working together with your child's school

Morning tea and a light lunch will be provided



7th & 8th November 2023
9.30am - 2.30pm



Wagga RSL
Corner Kincaid & Dobbs Street
Wagga Wagga NSW 2650

SCAN TO REGISTER



Interpreters available upon request

For more information or to register visit
www.positivepartnerships.com.au or contact
Trish Nicoll at tnicoll@positivepartnerships.com.au



For help, call:
1300 881 971

Order online before 10am



1

Create an account

- ✓ Go to <http://www.school24.com.au/contentbase/register>.
- ✓ Click on Create Account
- ✓ Fill in your details and submit

Please note

Your School Registration ID: **25321963**

If you need help call **02-89010398**

2

Before you can start ordering

- ✓ Login to your secure portal:
- ✓ Add Students
- ✓ Top-up your account

3

Placing an order

To place an order, follow these steps:

For Online Canteen/Tuckshop

- ✓ Select a student
- ✓ Enter or select the date
- ✓ Click on Start Order button and follow the prompts

Switch off the screen for a clearer mind.



HEALTHY EATING
ACTIVE LIVING



Parkview Public School Canteen Menu – Term 2 2023

Canteen opens daily 10am to 2.00pm – Ph: 6953 2600

NEW
PRICES



Volunteer Helpers are always welcomed!
(E) Everyday (O) Occasional Foods from the guidelines

Weekly Specials

Monday

- * Stuffed Potato \$5.00
(Potato, Mince, Corn, Taco Seasoning & Cheese)
- * Homemade Garlic Bread \$3.00
With cheese \$3.50

Tuesday

- * Pizza Pockets (E) \$5.00
(Wrap, Ham, Cheese, Tomato Sauce, Herbs)
- * Chicken and Gravy Roll (E) \$5.00
(Chicken fillet, Gravy, bread roll)

Wednesday

- * Meatball Sub (E) \$5.00
(Meatballs, Napoli sauce, Bread roll)
- * Chicken Parmi Burger (E) \$5.00
(Chicken fillet, Napoli sauce, Cheese, Lettuce, bread roll)

Thursday

- * Burrito (E) \$5.00
(Mince with Taco seasoning & Corn on a Wrap with Lettuce, Tomato, Cheese)

Friday

- * Hawaiian Burger (E) \$5.00
(Beef/Chicken paddy, lettuce, cheese, pineapple, tomato, BBQ sauce)

Daily Hot Food

- * Chicken Fillet Burger (E) \$4.00
(Chicken fillet)
- * Special Chicken Burger (E) \$4.50
(Chicken fillet, Lettuce, Mayo)
- * Salad Chicken Burger (E) \$5.00
(Chicken fillet, Lettuce, Tomato, Beetroot)
- * Cheesy Beef Burger (E) \$4.50
(Beef patty, Cheese, Tomato sauce)
- * Salad Beef Burger (E) \$5.00
(Beef patty, Lettuce, Tomato, Beetroot)
- * Hot Cheese Roll (E) \$2.50
- * Toasted Cheese Sandwich (E) \$2.50
- * Toasted Ham and Cheese Sandwich (E) \$3.00
- * Sausage Roll with T/S (Thur/Fri only) (O) \$4.00
- * Nuggets (Friday only) (O) 50c ea

Daily Salad Tubs and Wraps

- * Salad Only (E) \$4.50 sml \$7.00 lge
(Lettuce, carrot, cucumber, tomato, beetroot, cheese)
- * Salad \$5.00 sml \$7.50 lge
with the choice of one of the following:
- * Ham (E) * Chicken (E) * Egg (E)
- Add 50c for any extras eg Egg & Chicken

Sandwiches/Rolls/Wraps

Extra 50c for Rolls and Wraps

- Vegemite (E) or Honey (E) \$2.00
- Cheese (E) \$2.50
- Chicken (E) \$3.00
- Salad-no meat (E) \$4.50
- Ham Salad (E) \$5.00
- Chicken Salad (E) \$5.00
- Egg (E) \$2.50
- Egg & Lettuce (E) \$3.00
- Ham (E) \$3.00

* GLUTEN FREE BREAD AVAILABLE

Drinks

- Bottled Water (E) \$2.00
- Fruit Box (E) \$2.00
- Chocolate Milk (E) \$3.00
- Strawberry Milk (E) \$3.00
- Orange Juice (E) \$3.00
- Chill J (fizzy fruit juice) (E) \$3.00

Recess – over the counter sales ONLY, no pre orders

- ½ cup Custard (E) 50c
- ½ Toasted Cheese Sand (E) 50c
- Pizza Sub (E) 50c
- Air popped popcorn (E) \$1.50
- Fresh Fruit (E) \$1.00
- ½ cup Jelly 50c
- Muffins – banana or blueberry \$1.00
- Yoghurt, fruit and muesli cup \$1.50
- Crumpets – Honey or Jam \$1.00
- Plain Rice Cracker & Cheese \$1.00

Ice Blocks & Ice Creams

- Frozen Juice cups (E) 50c
- Quelch Sticks (E) 50c
- Snap Stick (O) \$1.00
- Lite Bulla ice cream cup \$1.50

Extras

- Tomato Sauce Sachet 50c
- Forks 20c
- Spoons 20c
- Paper Bags 10c